

FINAL



| | | | | | |
|--|---------|----|---------|-----|--|
| Α.Σ.Ε. Δούκα 82 - 64 Triple Crown | | | | | |
| 40% | 8 / 20 | FT | 6 / 8 | 75% | |
| 46% | 22 / 48 | 2p | 23 / 47 | 49% | |
| 38% | 10 / 26 | 3p | 4 / 11 | 36% | |
| 55 | 29 - 26 | Rb | 22 - 5 | 27 | |
| | 14 | Tu | 9 | | |

Referees: Πόντας - Χρησιδής

| Each Period | 1st | 2nd | 3rd | 4th |
|--------------|-----|-----|-----|-----|
| Α.Σ.Ε. Δούκα | 31 | 18 | 16 | 17 |
| Triple Crown | 17 | 15 | 18 | 14 |

| End of Period | 1st | 2nd | 3rd | 4th |
|---------------|-----|-----|-----|-----|
| Α.Σ.Ε. Δούκα | 31 | 49 | 65 | 82 |
| Triple Crown | 17 | 32 | 50 | 64 |

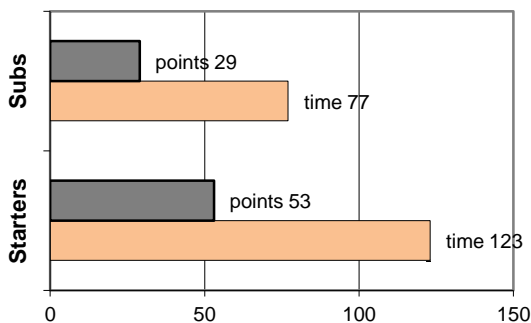


Coach: Π. Δημητρίου - Δ. Χρυσικός
 Α.Σ.Ε. Δούκα

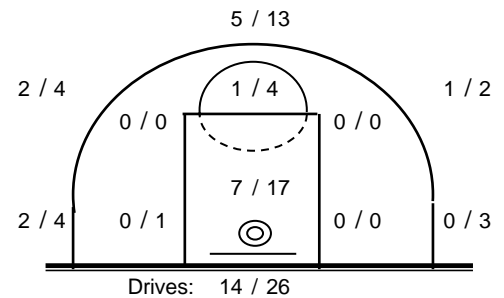
Fast Breaks 5 / 13

| # Player | Time (min) | Points | Ft | 2p | 3p | +/- | Rebs de | of | As | St | Tu | Bl | Fouls Wo | Co | Rkg* |
|---------------------|------------|--------|--------|---------|---------|-----|---------|----|----|----|----|----|----------|----|------|
| 4 Μαραγκόπουλος Κ. | 20 | 10 | 0 / 0 | 2 / 4 | 2 / 4 | 6 | 1 | 0 | 0 | 0 | 1 | 0 | 0 | 1 | 6 |
| 17 Κορμάς Ν. | 2 | 1 | 1 / 2 | 0 / 1 | 0 / 1 | 6 | 0 | 1 | 0 | 0 | 0 | 1 | 1 | 0 | - |
| 6 Κεσίσογλου Β. | 12 | 2 | 0 / 2 | 1 / 2 | 0 / 0 | 11 | 3 | 0 | 0 | 0 | 0 | 1 | 1 | 1 | 3 |
| 7 Ματσούκας Β. | 23 | 9 | 0 / 1 | 3 / 5 | 1 / 6 | 6 | 5 | 8 | 4 | 2 | 4 | 0 | 0 | 0 | 16 |
| 8 Δημητρός Θ. | 31 | 12 | 2 / 2 | 2 / 5 | 2 / 7 | 16 | 5 | 2 | 2 | 1 | 2 | 1 | 3 | 2 | 13 |
| 9 Δάφνης Αγ. | 20 | 5 | 0 / 0 | 1 / 3 | 1 / 1 | 7 | 0 | 0 | 3 | 3 | 0 | 0 | 0 | 2 | 9 |
| 10 Κορκόντζελος Κ. | 37 | 25 | 5 / 10 | 7 / 14 | 2 / 5 | 24 | 3 | 4 | 7 | 5 | 4 | 0 | 7 | 3 | 25 |
| 21 Μπίνος Αλ. | 2 | 0 | 0 / 0 | 0 / 0 | 0 / 0 | 3 | 0 | 0 | 0 | 0 | 0 | 0 | 0 | 0 | - |
| 12 Μιχελάκης Σ. | 26 | 8 | 0 / 2 | 4 / 9 | 0 / 0 | 1 | 9 | 7 | 1 | 2 | 2 | 2 | 1 | 2 | 20 |
| 19 Γεωργιόπουλος Σ. | 4 | 2 | 0 / 0 | 1 / 2 | 0 / 0 | 3 | 1 | 1 | 0 | 0 | 0 | 0 | 0 | 0 | - |
| 14 Μανεισιώτης Χρ. | 12 | 2 | 0 / 0 | 1 / 2 | 0 / 0 | -7 | 1 | 2 | 0 | 0 | 0 | 0 | 0 | 2 | 4 |
| 20 Κασιμάτης Π. | 11 | 6 | 0 / 1 | 0 / 1 | 2 / 2 | 14 | 1 | 1 | 1 | 1 | 1 | 0 | 1 | 1 | 7 |
| Team | | | | | | | 0 | 0 | | | 0 | 0 | 0 | | |
| 1st quarter | | 31 | 4 / 6 | 6 / 11 | 5 / 10 | | 8 | 7 | 7 | 2 | 3 | 2 | 3 | 4 | 42 |
| 2nd quarter | | 18 | 0 / 2 | 6 / 11 | 2 / 5 | | 9 | 7 | 3 | 3 | 6 | 0 | 1 | 5 | 24 |
| 3rd quarter | | 16 | 3 / 10 | 5 / 13 | 1 / 6 | | 6 | 8 | 5 | 4 | 3 | 0 | 6 | 3 | 16 |
| 4th quarter | | 17 | 1 / 2 | 5 / 13 | 2 / 5 | | 6 | 4 | 3 | 5 | 2 | 3 | 4 | 2 | 24 |
| Final Stats | 200 | 82 | 8 / 20 | 22 / 48 | 10 / 26 | 90 | 29 | 26 | 18 | 14 | 14 | 5 | 14 | 14 | 106 |
| | | | 40% | 46% | 38% | | 55 | | | | | | | | |

Starters- Subs ratio



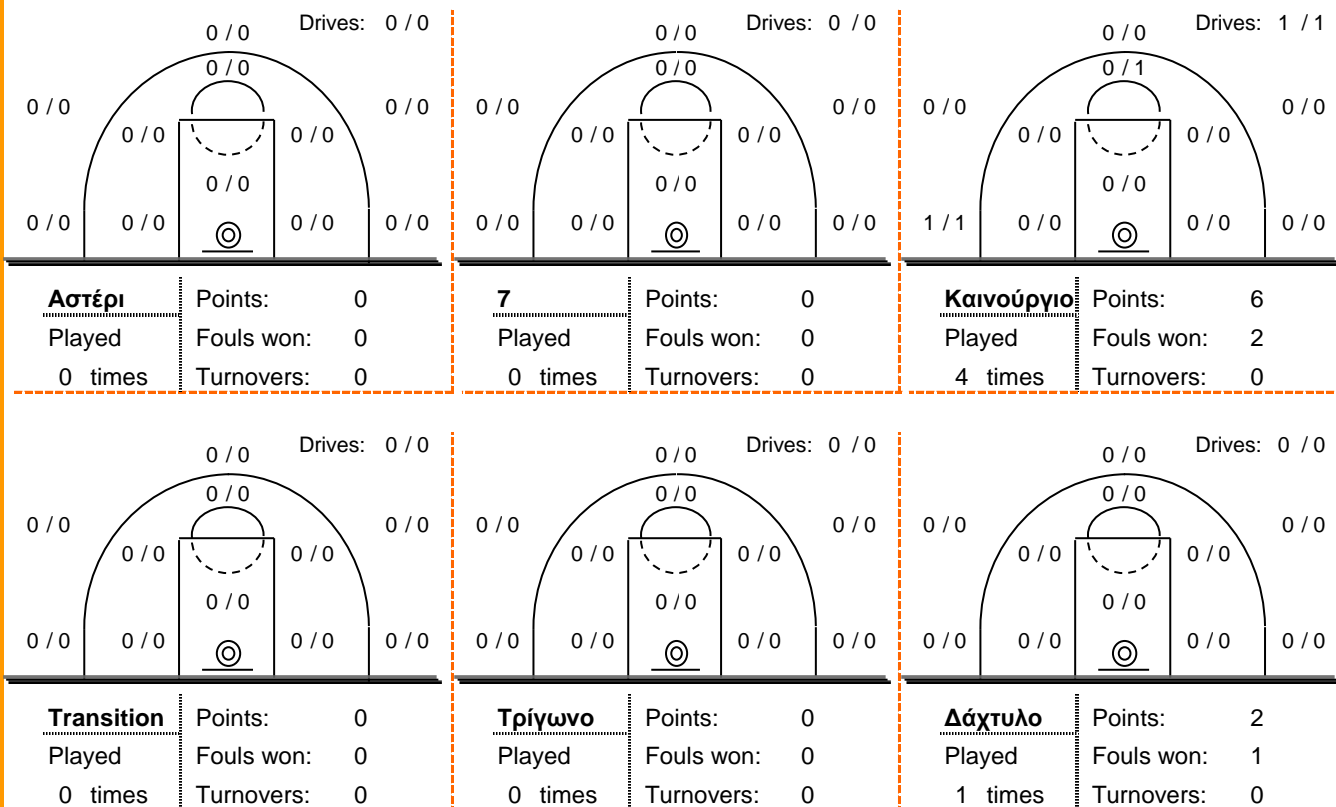
Shot Chart



*Ranking= Pts+Rebs+As+St+B-Mished Shots-Tu (Time Played>7min.)

Offense Analysis

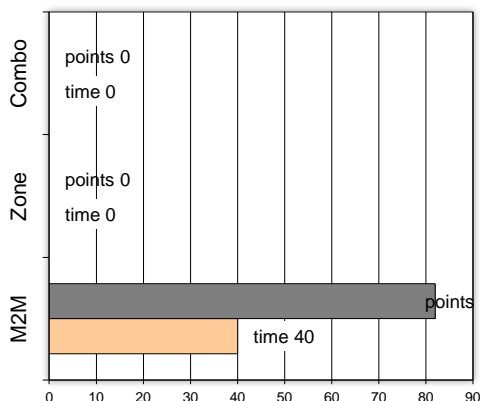
Play performance:



Against Defense Types:

Turnovers:

Fast breaks:



Έγιναν 14 λάθη
1 ήταν χρονικές υπερβάσεις,
1 ήταν παραβάσεις γραμμών,
12 ήταν λάθη κατοχής και
0 ήταν βήματα ή μεταφορά.

Επετεύχθησαν 5 αιφνιδιασμοί
1 ήταν πρωτεύοντες
0 ήταν δευτερεύοντες
4 προήλθαν από λάθος
του αντιπάλου

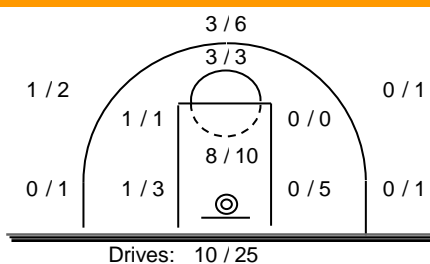
Πραγματοποιήθηκαν συνολικά 96 επιθέσεις, με απόδοση 0.85 έναντι 75 επιθέσεων των αντιπάλων.

Defense Analysis

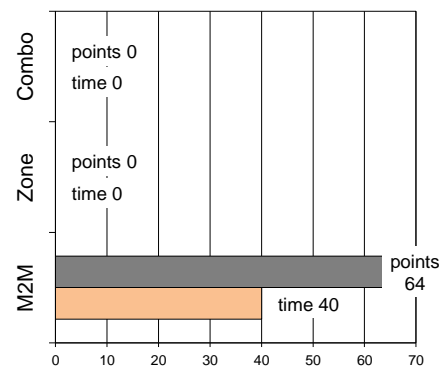
Triple Crown

| | | | |
|----|------------------|----|----|
| 4 | Αβραμπός Η. | 3 | -1 |
| 16 | Παπαδημητρίου Π. | 2 | |
| 6 | Μιχαλάκης Ν. | 5 | -1 |
| 7 | Ντιππσης Κ. | 14 | -1 |
| 17 | Παπαγιαννακός Δ. | 2 | |
| 9 | Παπαχρήστος Α | 4 | |
| 10 | Σπανός Α. | 8 | -1 |
| 11 | Παπασταύρου Α. | 6 | |
| 12 | Σφακιανάκης Γ-Μ. | 6 | |
| 18 | Ελ Ν. | 4 | |
| 20 | Μιχελάρκης Ν. | 6 | |
| 15 | Κουντης Λ. | 4 | |

Opponent's shot chart

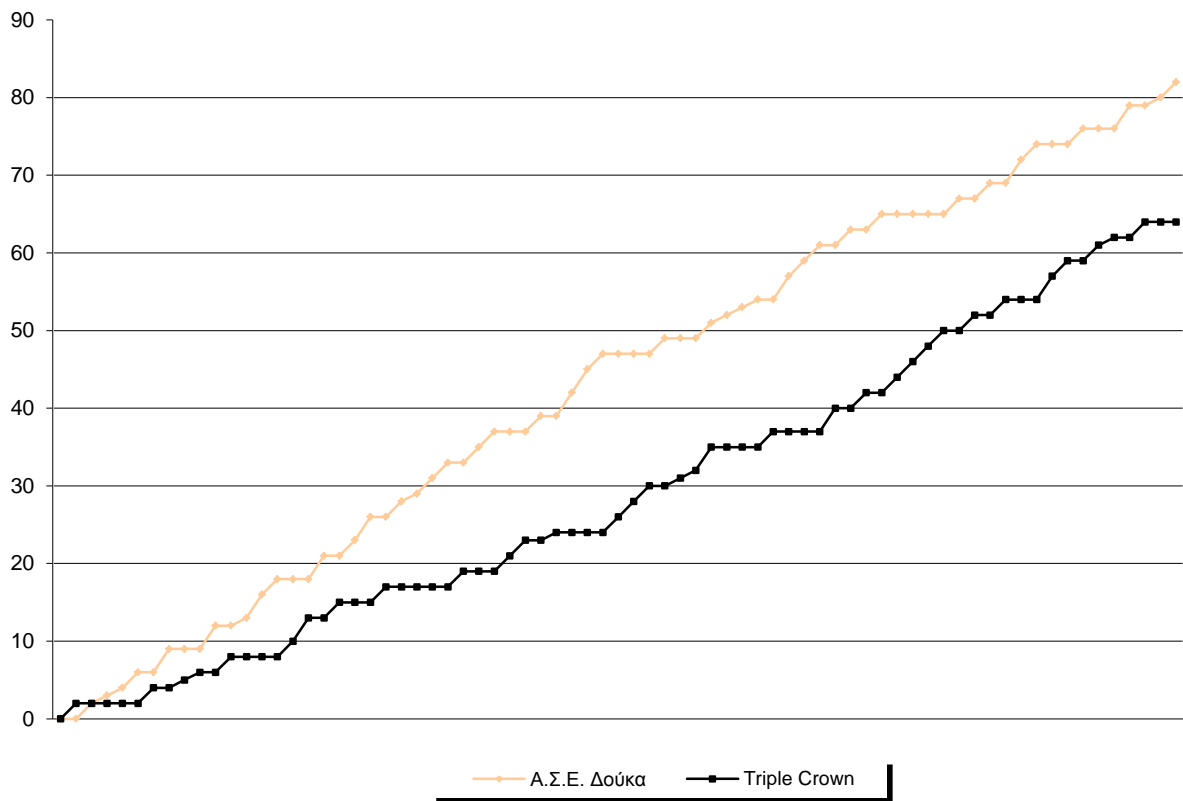


Defense Types Performance

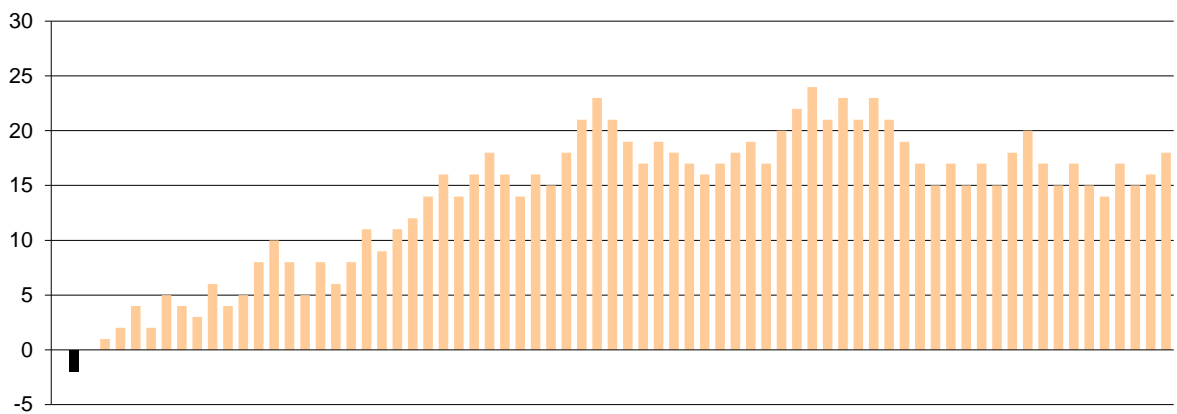


Graphic Stats

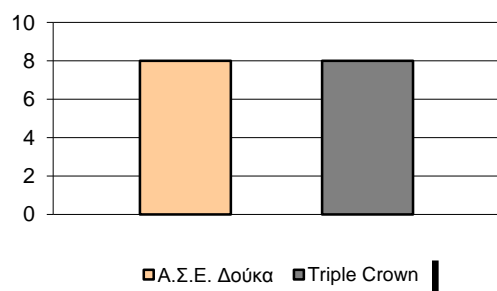
Score Evolution



Score Difference



Largest Scoring Run



Notes